



December 6 and 15, 2016

Thank you for attending the Public Information Open House for the proposed widening of State Route (SR) 20 from Canton to Cumming (I-575 to N. Corners Parkway), PI Numbers 0009164, 0014131, 0014132, 0014133, 0002862, and 0003682. Our goal is two-fold: 1) to provide you with information on the proposed project and 2) to provide an opportunity for you to give us your comments on the proposed project. In this handout package, you will find a description of the project, a map of the project location, and a comment card.

As you enter the room, please take a look at the project displays. Georgia Department of Transportation (Georgia DOT) representatives, wearing nametags, are available to discuss the project and answer your questions. There will be no formal presentation.

We hope you will take the opportunity to tell Georgia DOT what you think. Listed below are several ways to comment on the project. Your comments are important to us, and should you provide comments by one of the methods noted below, we will respond to you in writing usually within the next 30 days. All comments will become part of the project's official record.

While you are attending the open house, you can **provide your comments today** by filling out the comment card provided with this handout and dropping it in the comment box, or you may choose to provide your verbal comments to the court reporter who will transcribe your comments.

You can also **provide your comments by Friday, December 30, 2016** by using either of the following methods:

- Online at [www.dot.ga.gov/PS/Public/PublicOutreach](http://www.dot.ga.gov/PS/Public/PublicOutreach)
  1. From the *By Project* drop down box menu, select the following project listing: *SR 20 Improvements 2016* and click *Go*;
  2. Then click *Comment* and follow the instructions to leave your comments.
- Mail in your comment card to Mr. Eric Duff, Georgia Department of Transportation, 600 West Peachtree Street NW, 16<sup>th</sup> Floor, Atlanta, Georgia 30308.



The project displays and plans will be available for review until December 30, 2016 at the *Public Outreach* page at [www.dot.ga.gov](http://www.dot.ga.gov), described above. Hard copies will also be available at the Georgia DOT District 1 Office located 2505 Athens Highway SE, Gainesville, GA 30507 and the District 6 Office located at 500 Joe Frank Harris Pkwy., Cartersville, GA 30120-0010. Following the public comment period, a copy of all comments received will be available by request at the Atlanta address listed above. For additional information regarding the history of the project, please view previous public meeting materials and documents at <http://www.dot.ga.gov/BS/Projects/SpecialProjects/SR20Improvements>.

Again, thank you for attending this open house. If you should have any questions or need additional information, feel free to contact the project manager, Nicole Law, at 404-631-1723 / [SR20Improvements@dot.ga.gov](mailto:SR20Improvements@dot.ga.gov) or the environmental analyst, Aaron Burgess, at 404-631-1159 of the Office of Environmental Services.

Sincerely,

A handwritten signature in blue ink that reads "Eric Duff / esd".

Eric Duff  
State Environmental Administrator  
Georgia Department of Transportation

**Why We Are Here:**

The proposed project is needed to improve mobility and safety and to reduce congestion along SR 20 from I-575 in Cherokee County to North Corners Parkway in Forsyth County.

**Project Description:**

The proposed project would widen an approximately 20 mile section of SR 20 between I-575 in Cherokee County and North Corners Parkway in Forsyth County. The project proposes a total of six lanes, with three travel lanes in each direction, separated by a raised median. The required right-of-way width would range between 200 and 250 ft. Additionally, the project proposes innovative intersection improvements throughout the corridor, with numerous Restricted Crossing U-Turn (RCUT) intersections to improve safety.

This corridor project has been divided into Six (6) projects with the following limits:

- PI 0009164 – I-575 to Scott Road (1.2 Miles)
- PI 0014131 – Scott Road to Union Hill Road (2.0 miles)
- PI 0014132- Union Hill Road to East Cherokee Drive (3.2 miles)
- PI 0014133- East Cherokee Drive to SR 369 (2.1 miles)
- PI 0002862- SR 369 to SR 371/Tribble Road (6.3 miles)
- PI 0003682- SR 371/Tribble Road to North Corners Parkway (5.2 miles)

**What is a Restricted Crossing U-Turn (RCUT) Intersection?**

The RCUT is an innovative intersection design that improves safety and operations by keeping traffic on side roads, from crossing or turning left at an intersection with a major road, such as SR 20. Figure 1 represents an RCUT intersection. The dotted yellow lines and arrows represent traffic movements, where left turning and crossing traffic from the north bound side road would need to turn right and make a U-turn at the designated location before continuing in the desired direction. The RCUT would not change any of the movements that are possible from SR 20.

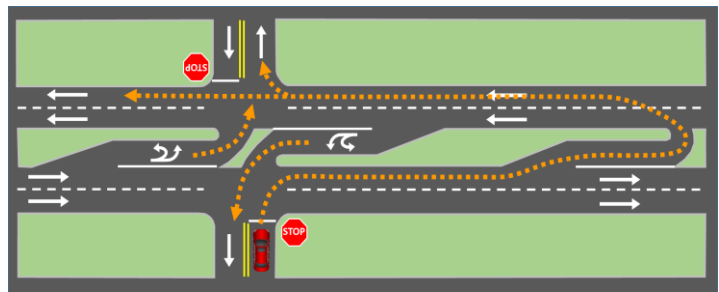
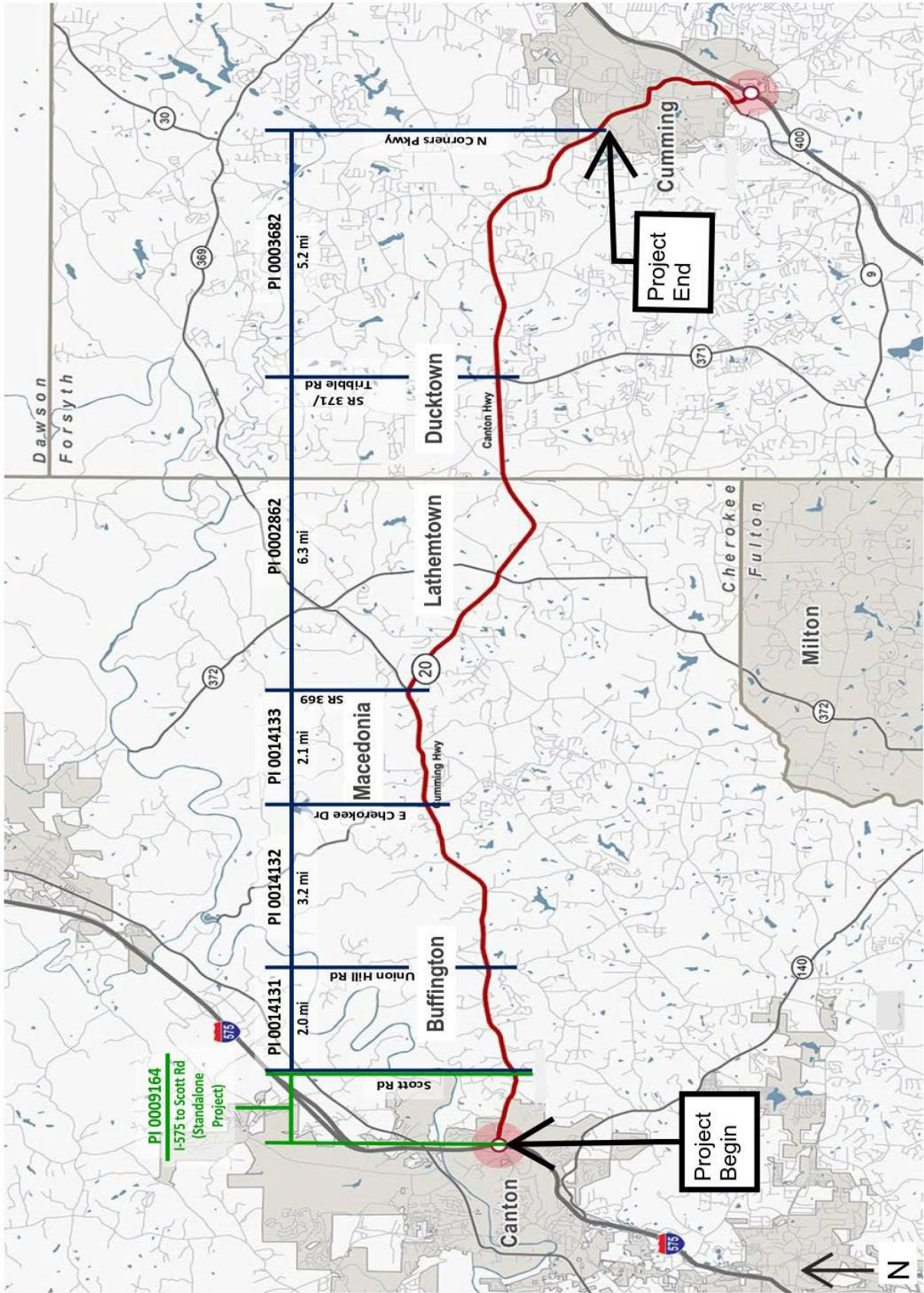


Figure 1

RCUTs work well when consistently used at intersections along a roadway but they also can be used effectively at individual intersections. The Restricted Crossing U-Turn design reduces the total number and overall severity of vehicle-to-vehicle conflict points and can improve the overall roadway operations. RCUTs have also been shown to decrease delay experienced by motorist wishing to make a left turn during periods of higher volumes, reducing the time it takes to clear an intersection and resume normal travel speeds.

For more information on the SR 20 project specific RCUT intersections, visit the displays during the PIOH or online. Instructions for accessing project information online can be found on the Welcome Letter (Page 1) in this packet.

Project Location Map





How did you hear about this Open House? (check)

**Radio**    **Newspaper**    **Signs**    **Word of Mouth**    **Other** \_\_\_\_\_

Was the location of the Open House convenient for you to attend?                       **Yes**                       **No**

If no, please suggest a general location that is more convenient to your community.

\_\_\_\_\_

Was the time of the meeting convenient for you to attend?                       **Yes**                       **No**

If no, please suggest a time frame that is more convenient for you.                      \_\_\_\_\_

Were your questions answered by GDOT personnel?                       **Yes**                       **No**

Do you understand the project after attending this meeting?                       **Yes**                       **No**

Please share any additional comments and/or your suggestions on improving the ways GDOT conducts Open Houses:

\_\_\_\_\_  
\_\_\_\_\_  
\_\_\_\_\_  
\_\_\_\_\_  
\_\_\_\_\_  
\_\_\_\_\_  
\_\_\_\_\_  
\_\_\_\_\_

Mail to:  
*Mr. Eric Duff*  
*Georgia Department of Transportation*  
*600 West Peachtree Street, NW – 16<sup>th</sup> Floor*  
*Atlanta, Georgia 30308*



How did you hear about this Open House? (check)

**Radio**    **Newspaper**    **Signs**    **Word of Mouth**    **Other** \_\_\_\_\_

Was the location of the Open House convenient for you to attend?                       **Yes**                       **No**

If no, please suggest a general location that is more convenient to your community.

---

Was the time of the meeting convenient for you to attend?                       **Yes**                       **No**

If no, please suggest a time frame that is more convenient for you. \_\_\_\_\_

Were your questions answered by GDOT personnel?                       **Yes**                       **No**

Do you understand the project after attending this meeting?                       **Yes**                       **No**

Please share any additional comments and/or your suggestions on improving the ways GDOT conducts Open Houses:

---

---

---

---

---

---

---

---

---

---

Mail to:  
*Mr. Eric Duff*  
*Georgia Department of Transportation*  
*600 West Peachtree Street, NW – 16<sup>th</sup> Floor*  
*Atlanta, Georgia 30308*